

iT *Services* *Support Limited*

***This document gives a
summary of how to install,
launch and verify the
installation of the Microsoft
VPN Client***

Contents

1 Installing the Microsoft VPN Client

Microsoft VPN Client for Windows (other than 98)

2 Configuring the Microsoft VPN Client

Configure Network Parameters on the Client

3 Launching and Verifying the Microsoft VPN Client

Launching the Client Verifying the VPN

Connection What to do if something goes

wrong!

4 Configuring and Launching Microsoft VPN Client for 98

Version Release	Date	Circulation	Changes
1.0	8 th July 2008	VPN Project Group	

Feedback

If you notice any mistakes in this document please contact the Network Project Office. Email should be sent to the address info@itservicesconnected.co.uk

1 Installing the Microsoft VPN Client The

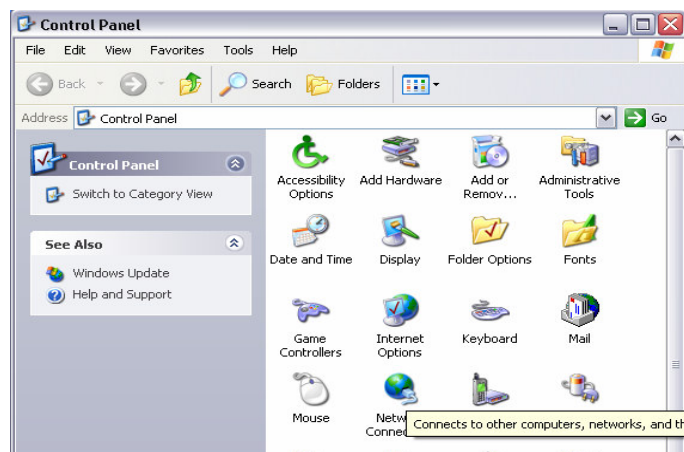
information you will need:

- Network Username
- Active Directory/Network User Password
- VPN target IP address

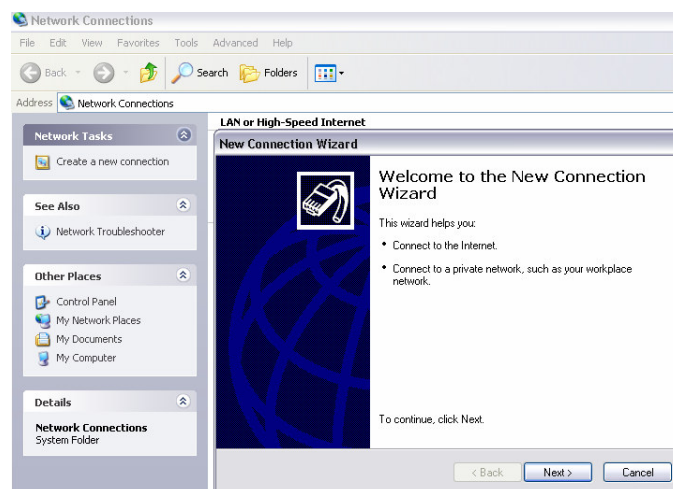
Your username and password will be the one used by users to log onto your company workstation or laptop on a day to day basis.

Microsoft VPN Client for Windows

1. The Microsoft VPN Client can be found on your PC. You <click> **start > settings** and then open **Network Connections** .



2. Once a new window opens, <click> **create a new connection** at the top left of the window, which starts off the 'Create a New Connection Wizard'.



2 Configuring the Microsoft VPN Client

1. Now <click> next and highlight the button 'Connect to the network at my workplace', and then <click> next .

2. <click> Virtual Private Network connection and then next.



3. Type in a description of the connection, such as 'Your Office VPN' for example, and then <click> next.

- 1 <click> the 'Do not dial the initial Connection', and then <click> next again .
- 2 Now enter the target address of ←-----See **ITServices**-----> and then <click> next.



6. Leave the connection setting to 'My use only' and then <click> next . You have finished, but it may be of use to tick the box available, in order for a Shortcut to the VPN Client to be placed on your computer desktop.



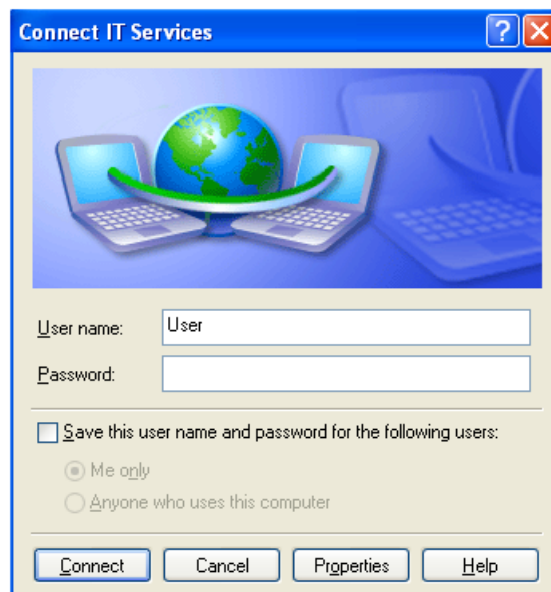
Congratulations..... Your VPN Client is now configured and ready for use.

3 Launching the Microsoft VPN Client

Launching the Client

Once the user wishes to establish a VPN connection into your network, the following steps should be followed:

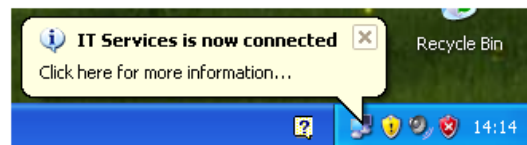
<Click> the shortcut on your desktop and a new window will open



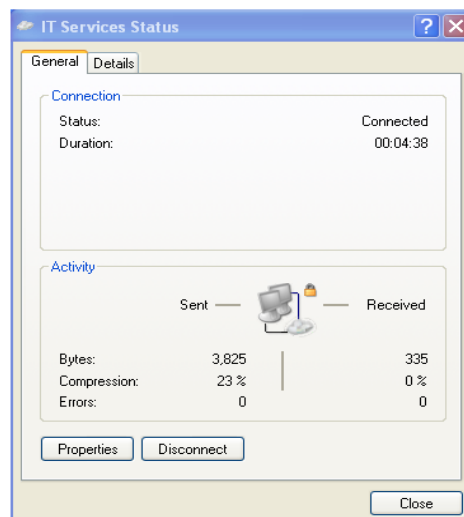
Before connecting with our VPN client 2 configuration changes must be made.

<click> **Properties**. <click> **Security** tab. <Tick> **Include Windows Logon Domain**
<click> **Networking** tab, <click> **Properties** while selecting **Internet Protocol [TCP/IP]**
<click> **Advanced**. <untick> **Use Default Gateway On Remote Network**. <click> **OK** 3 Times to exit and save changes.

Now enter your username and password & domain information (if appropriate). <click>

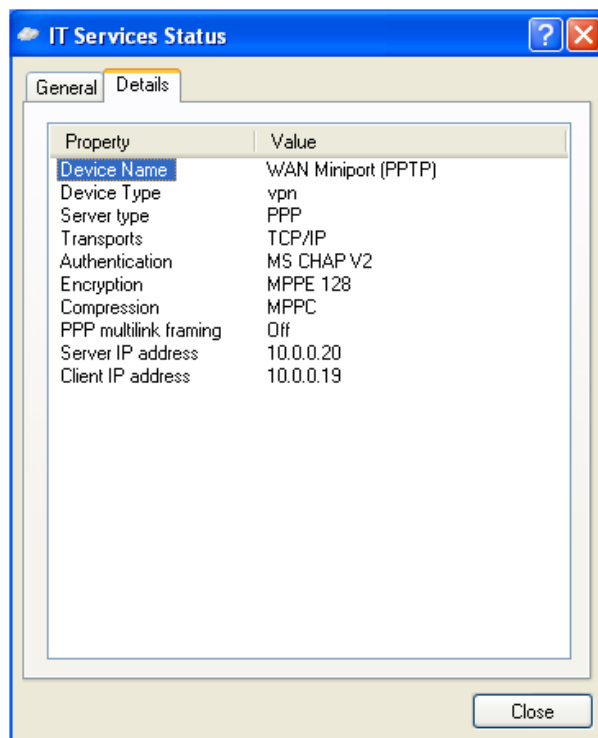


When you want to disconnect from the VPN, <double click> the icon at the bottom right of your screen, and a window pops up (below), and you can press **Disconnect** to end your VPN Connection to your network.



Verifying the VPN Connection

If you wish to verify the VPN connection, you can <double click> on the little icon at the bottom right of the computer screen and a Window will open up, letting you view VPN statistics.



What to do if something goes wrong!

Hopefully, very little can go wrong! Amongst the scenarios that could happen are:

1. You enter the wrong details into the VPN Client during configuration

To correct the Client properties, open the VPN Client and <click> on the **properties** button. A window will appear that allows you to amend any details you have entered. By referring back through this document you can check all the parameters have been entered correctly.

2. The Client does not connect to Your Office network. Check that your firewall isn't blocking any connections.

Configuring and Launching Microsoft VPN Client for 98

- 1 Open **My computer > Dial up Networking** and enter a name for your connection (say, VPN for example). Click **ok** and then pass through the next screen.
- 2 Enter **ip of the server ITS has given you** as the address of the VPN Server
- 3 Windows 98 is now configured for the Office VPN. You can connect into the VPN by opening **My Computer > Dial Up Networking**, OR you can create a shortcut from the VPN icon and place this on your desktop.